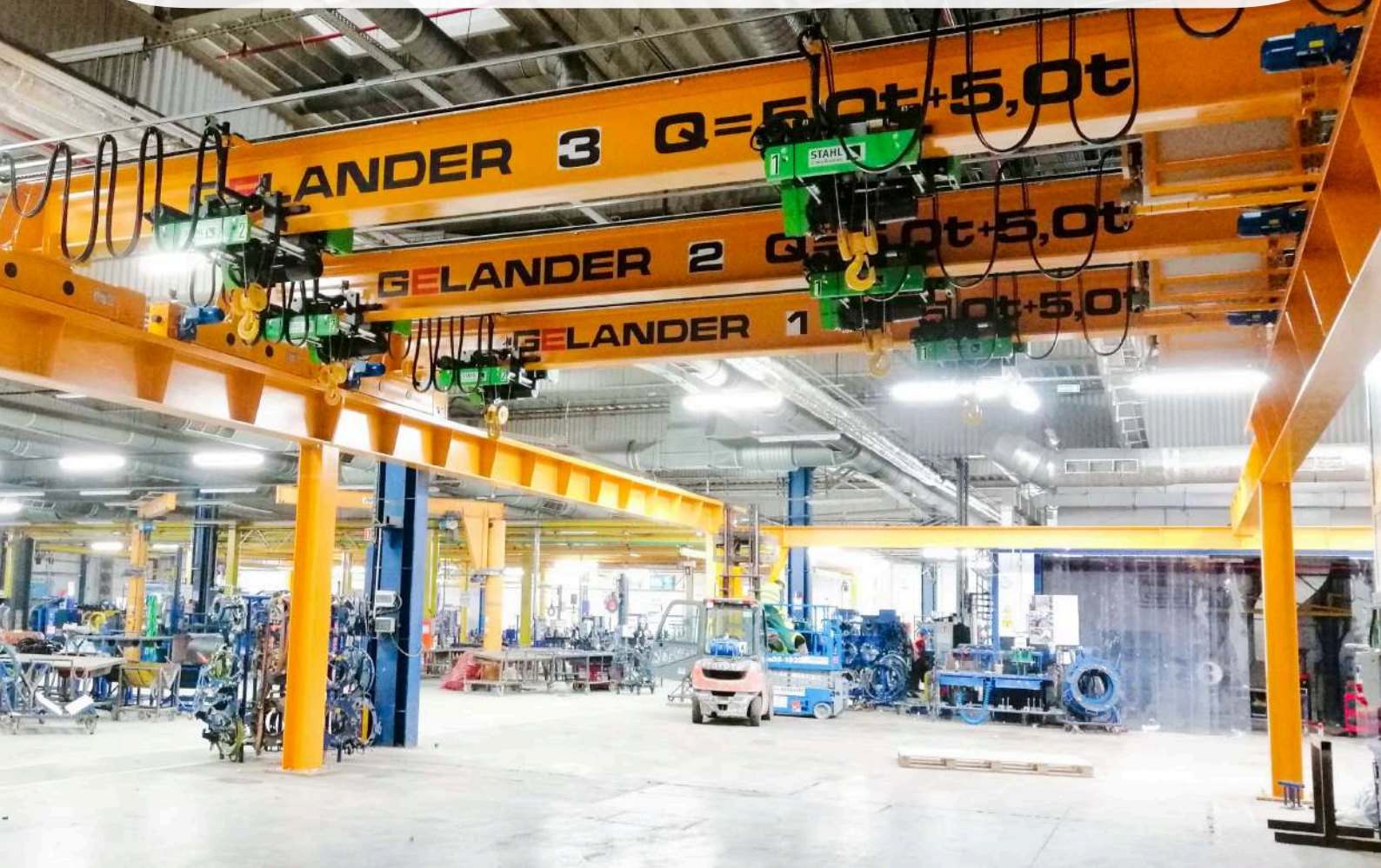


# **G**ELANDER **T**ECHNOLOGY **C**RANES

**DESIGN, MANUFACTURE AND INSTALLATION OF CRANES**



**Operation of overhead cranes and hoists in the  
TANDEM system → [gelander.com.pl](https://gelander.com.pl)**

**Website:**  
[gelander.com.pl](https://gelander.com.pl)

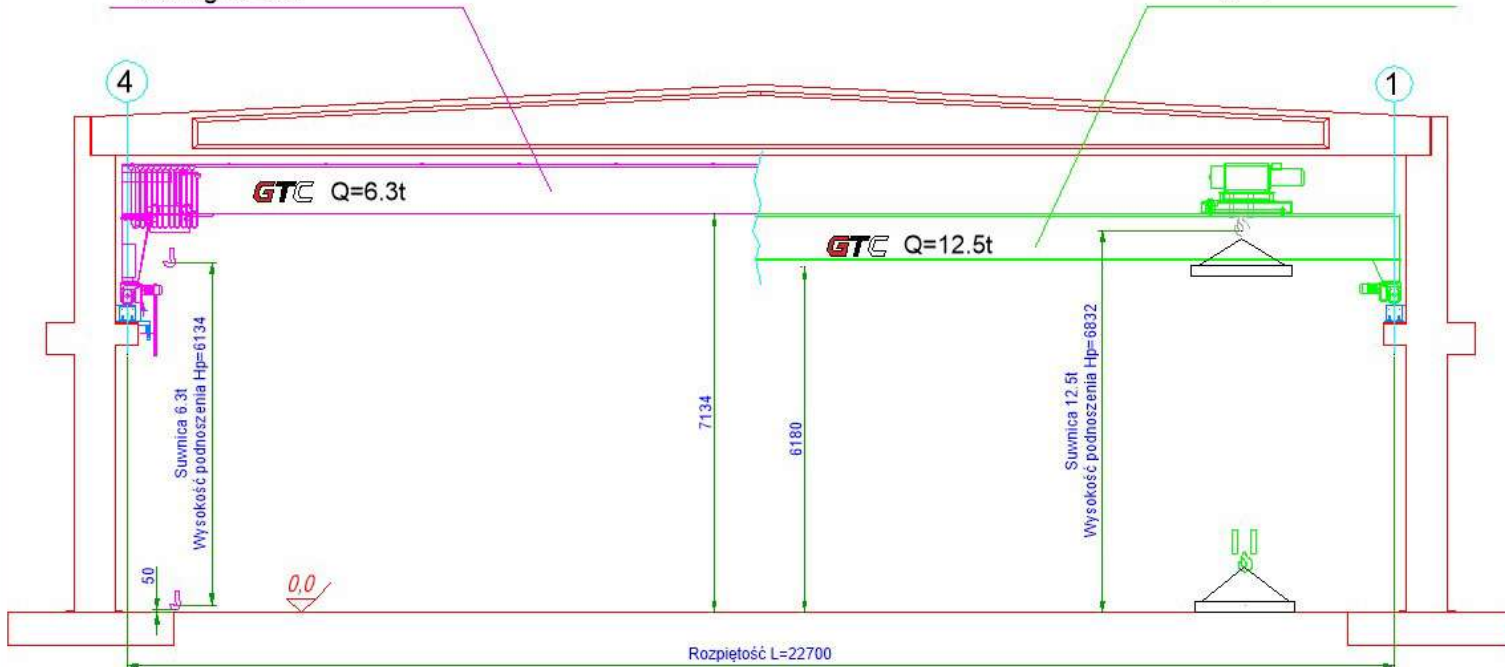
**Channel YouTube:**  
[youtube.com/@gelandercranetechnology](https://youtube.com/@gelandercranetechnology)

**Channel LinkedIn:**  
[linkedin.com/company/gelander-gtc-serwis](https://linkedin.com/company/gelander-gtc-serwis)

**Channel TikTok:**  
[tiktok.com/@gelander.gtc](https://tiktok.com/@gelander.gtc)

D-GR-312  
 Suwnica jednodźwigarowa  
 Udźwig Q=6.3t

D-GR-297  
 Suwnica dwudźwigarowa  
 Udźwig Q=12.5t



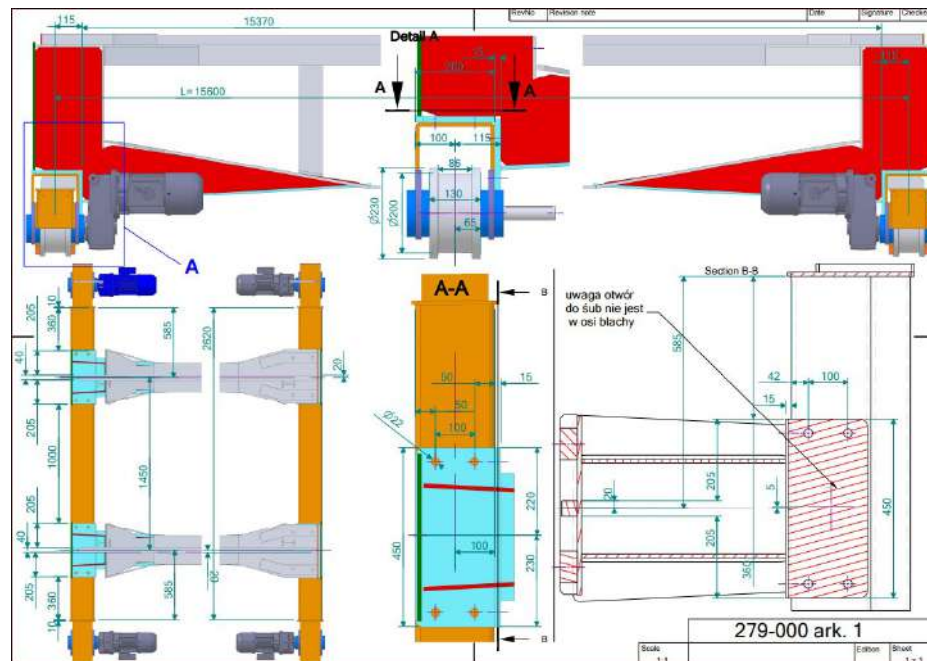
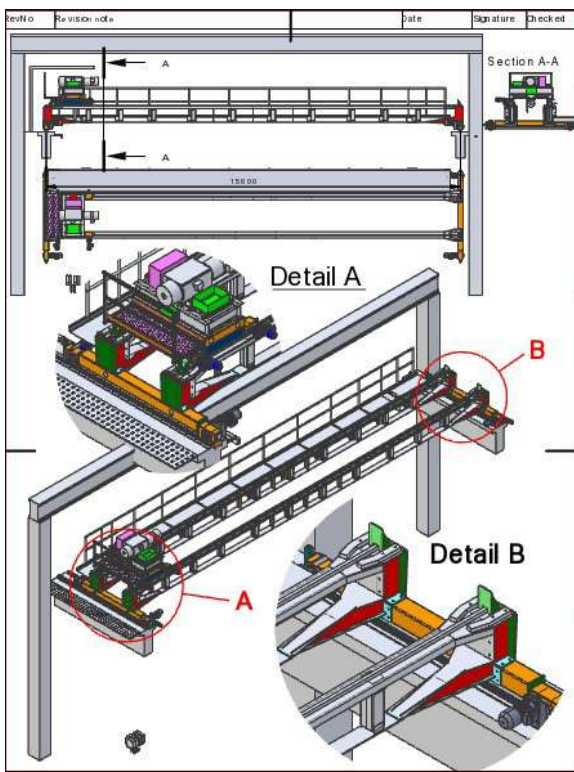
Suwnica DGR 297 12,5t + DGR 312 6,3t

Rysunek ofertowy

Edition	Sheet
	1 z 1

**When others decline because the project goes beyond the norm—WE rise to the challenge. We're the only ones who'll think outside the box!**

We're a Polish overhead crane manufacturer offering comprehensive project services covering every stage—from analyzing the building's structure, through the design and production of the cranes, to UDT inspection and commissioning. We perform a structural assessment of the building, including verification of the load-bearing capacity of the structure, runways and support elements, ensuring the safe installation of overhead cranes with a lifting capacity of up to 32 tons.



279-000 ark. 1

Scale: 1:1 Edition: Sheet: 1 z 1

## **OUR OFFER**

# **From design to installation of overhead cranes, including their supporting structures—complete UDT documentation**

- **Bridge, gantry, semi-gantry and underslung cranes, manufactured to proprietary designs, with a rated capacity up to 32t and spans up to 36m**
- **Optimization of crane runway beam cross-sections and their supporting structures, tailored to the Client's lifting requirements, including load-bearing analysis, duty classification, and maximum hook approach limits**
- **Preparation of construction reports signed by a licensed structural engineer for UDT (The Office of Technical Inspection) purposes**
- **Assessment of the possibility of modifying lifting capacity on existing crane runways, including the installation of additional cranes, together with the required construction documentation**
- **Manufacture, delivery and installation of crane runway beams with ensured straightness and continuity of joints.**
- **Manufacture of electric wire rope or chain hoists with lifting capacities up to 10t**
- **Option to supply cranes and hoists operating synchronously in TANDEM mode**
- **Installation on manufactured to proprietary designs fabricated steel structures or on existing steel and reinforced concrete columns**
- **Manufacture of stationary or slewing industrial jib cranes**
- **Design and fabrication of specialized equipment and structures such as spreader beams, grabs, platforms, and industrial halls**
- **Preparation of complete technical and as-built documentation, and participation in UDT acceptance inspections**



## **OUR OFFER**

# **Service support: maintenance, repairs, dismantling**

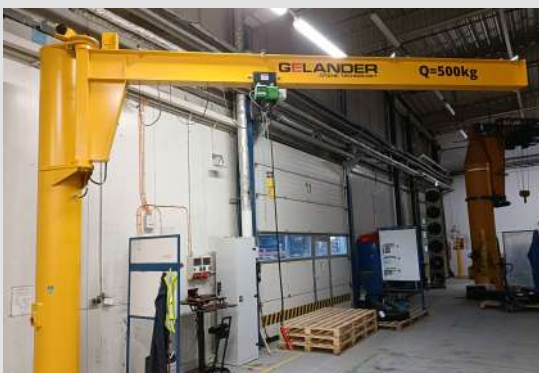


- **Removal of old cranes and installation of new cranes**
- **Monitoring the technical condition of equipment and its components**
- **Inspection of mechanical and electrical systems**
- **Determination of the remaining service life of lifting equipment**
- **Execution of ongoing repairs, including replacement of wear parts such as ropes, blocks, brakes, and bearings**
- **Adjustment of components such as load limiters, brakes, and buffers**
- **Establishment and maintenance of equipment maintenance logs**
- **Performing electrical measurements and tests**
- **Execution of commissioning and load tests**
- **Preparation of complete modernization documentation**
- **Implementation of modern drive technologies in lifting equipment, including frequency converters, and replacement of motors and gearboxes**
- **Participation of qualified personnel in periodic inspections and UDT (The Office of Technical Inspection) acceptance procedures**

## OUR OFFER

# Design, manufacture and installation of lifting equipment

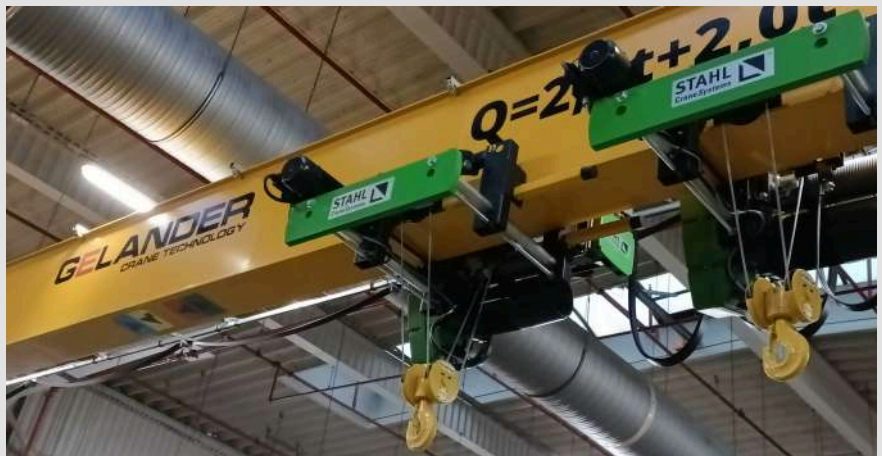
## RUNWAYS AND CRANE SYSTEMS



## OUR OFFER

# Design, manufacture and installation of lifting equipment

## HOISTS AND WINCHES



## OUR OFFER

# Design, manufacture and installation of lifting equipment

SPECIAL DEVICES AND STRUCTURES



Are you looking for a **RELIABLE AND FLEXIBLE**

**BUSINESS PARTNER?**



**Our strengths**

We construct crane runways according to specifications—with complete flexibility in design parameters.

**We offer:**

- Design and technical consulting from our engineers at every stage of the project
- Competitive pricing for services and products
- Availability of spare parts and comprehensive maintenance services
- The highest and consistent quality of services provided
- Short lead times
- A personalized approach and full commitment
- High standards of communication

**Benefits for the Investor:**

- A single contractor responsible for the entire process—from runway design to crane acceptance
- All documents, including construction documents, required for acceptance by the The Office of Technical Inspection
- We will select the most cost-effective option for the highest load capacity of the hall
- Fast and hassle-free acceptance by the UDT - full documentation provided by us
- Technical support and expert advice - real action, not just slogans

**Gelander  
Technology  
Cranes**  
Polish manufacturer  
20 years of experience

✉ [biuro@gelander.com.pl](mailto:biuro@gelander.com.pl)

☎ SECRETARIAT  
+48 668 394 490

☎ TECH DEPARTMENT  
+48 539 687 520

📍 GTC Serwis Sp. z o.o.  
ul. Śląska 15  
44-105 Gliwice  
**DELIVERY ADDRESS**  
📍 ul. Pyskowicka 29  
41-807 Zabrze